

2024

CONGRESS

PROGRAM

AQÉI

INDIGENOUS PEOPLE

and enviromental assessments

UNIVERSITÉ LAVAL

Québec - November, 18 to 20, 2024



THANKS TO OUR
MAJOR PARTNERS!



Environnement,
Lutte contre
les changements
climatiques,
Faune et Parcs



THANKS TO OUR PARTNERS!

PRESTIGE PARTNER



CAIN LAMARRE

GOLD PARTNER



Desjardins

Caisse de l'Administration
et des Services publics

GOLD PARTNER

GRUPE
SYNERGIS

SILVER PARTNER



TRANSFERT
ENVIRONNEMENT ET SOCIÉTÉ

BRONZE PARTNER



BRONZE PARTNER

Québec 

THANKS TO OUR COLLABORATORS!



Faculté de foresterie,
de géographie et de géomatique
Département de géographie

THE GRAPHIC DESIGN OF THIS PROGRAM WAS CREATED BY:



La solution pour
les associations

THANKS TO THE ORGANIZING COMMITTEE!

Head of Committee

- Yves Rochon, *environmental assessment specialist*

Members of comitee

- Geneviève Bélanger, *associate regional director, Impact Assessment Agency of Canada, Quebec regional office*
- Alexandra Boileau, *president of AQÉI, project director, Transfert environnement et société Québec*
- Nathalie Gravel, *associate professor, interim director of the Agroforestry Program, Université Laval*
- Jean Hébert, *general manager of AQÉI, consultant, trainer and lecturer in environmental and social management and international development*
- Jacynthe Ledoux, *environmental and aboriginal lawyer, Cain Lamarre LLP*
- Julie Magoules, *AQÉI manager, administrative management of the Association*
- Annie Prince, *environmental project manager, major projects and impact studies, direction environnement, Hydro-Québec*
- Sébastien Weissenberger, *professor of environmental sciences, Université TELUQ*

Collaborators of Committee



Institut de développement
durable des Premières Nations
du Québec et du Labrador

Suzann Méthot
Consultant

Supporting community initiatives

**Association
québécoise pour
l'évaluation
d'impacts**

Each year, caisse members support the social well-being and sustainable development of their community.

caissedesjardinsadmin.ca/en

 **Desjardins**
Caisse de l'Administration
et des Services publics

WELCOME FROM THE HURON-WENDAT NATION

The Huron-Wendat Nation is delighted to welcome the annual AQÉI Congress to the Nionwentsio.

Nionwentsio, which means “our magnificent territory” in the Wendat language, is the main territory on which the rights guaranteed to the Huron-Wendat Nation under the Huron-British Treaty of 1760 apply. At the heart of Wendat identity and culture, the Nionwentsio bears witness to the practical, social and emotional bond between the Wendat and the land and its resources. As stewards of the land, the Huron-Wendat Nation invites you to join us in expressing gratitude for all that the land has offered, offers and continues to offer.

The Huron-Wendat Nation recognizes the importance of environmental assessment processes. These processes not only help to maintain the ecological integrity of the territory, but also to assess the impact of projects on the rights, activities and interests of the Huron-Wendat Nation, in order to defend and protect them. This conference represents an opportunity for the Nation to exchange best practices in impact assessment and to share its experience and expertise in this field.

OPENING AND CLOSING CEREMONY

My prayer is my ritual...

The ceremony aims to introduce people to First Nations culture. The aim is to link the teachings of Elder Raymond Gros-Louis (accompanied by his wife, an Elder's Helper) with the themes addressed by the organization. Elder Raymond Gros-Louis will present in his traditional language to honor the unceded territory of Nionwentsio.

A circle of four people attending the meeting will be formed to represent the four directions. Settlement permitting, the Elder will burn sacred herbs, which will be fanned by an eagle feather for purification. This beautiful moment will be accompanied by the sound of a wild turkey whistle. Step by step, he will lead people to touch the spiritual aspect of the Great Sacred Circle of Life.

RAYMOND GROS-LOUIS

Born in 1945, Raymond Gros-Louis is a Huron-Wendat resident of Wendake. After being a mechanic for several years, he decided to make the leap and live from his culture, that since 1992. Today he is recognized as Elder by different Nations across Canada as well as Wise man in his community. His knowledge and expertise are sought for First Nations cultural awareness sessions with various organizations, whether business, school or government.

In addition, it is important to highlight his significant contribution in the past to the Aboriginal Healing Foundation. After 30 years of dedicated service to helping our Aboriginal brothers and sisters on their journey of healing in federal correctional institutions, on November 15, 2010, he received a certificate of recognition from a prestigious organization. A certificate thanking him for his implementation of the principles of restorative justice in the service of justice and peace.



INTRODUCING THE PRESENTERS

SUZANN MÉTHOT

Host and collaborator to the 2024 Congress, Independent consultant



Suzann Méthot acts as an independent consultant to companies and organizations requiring support in building respectful relationships with the community and strategic guidance in the natural resources sector in Quebec. Suzann has acquired a global vision and integrated approach over 25 years of experience, particularly with northern communities. Over the course of her career, she has worked with all stakeholders involved in the development of northern territories, as well as with northern communities, both aboriginal and non-aboriginal, spread mainly over the Côte-Nord, Eeyou Istchee Baie-James, Nunavik and the entire Canadian boreal forest. She has headed the environmental NGO, Canadian Boreal Initiative in Quebec, was a founding member of the Table des Partenaires du Plan Nord, acted as a commissioner for the Office de Consultation publique de Montréal (OCPM) and chaired the Comité d'examen des répercussions sur l'environnement et le milieu social (COMEX) in James Bay, where she mainly dealt with mining, logging, waste management and energy issues. Since 2021, she has been a member of the federal impact assessment panel.

YVES ROCHON

Environmental assessment specialist and head of the Programming committee, AQÉI

Yves Rochon holds a Bachelor's degree in biology from Université de Montréal and a Master's degree in water science from the Institut national de la recherche scientifique. He worked for the Ministère de l'Environnement, de la Lutte contre les changements climatiques, de la Faune et des Parcs (MELCCFP as a professional and as a manager in the field of environmental assessment) from 1988 to 2022. Retired from the public service since 2022, Mr. Rochon now acts as a consultant and trainer for companies, universities and governments in the field of environmental assessment. In January 2023, he became Head of the Programming Committee of AQÉI.



PASCALE LABBÉ



With a master's degree in international relations, Pascale Labbé has been working in the field of for some fifteen years. She worked for several years in aboriginal consultation for the the Environmental Assessment Branch of the MELCCFP, before becoming coordinator of the Office of Aboriginal Affairs the Department of Justice. She has taught political science at the Kiuna Institution and worked worked on the missing Aboriginal children file for the Secrétariat aux Relations avec les Premières Nations and Inuit Relations. Returning to the environmental field, she is currently responsible for the development of the protected area status for the MELCCFP's *Direction générale des territoires protégés*.



Our team, deployed across the territory, brings its diverse legal expertise to serve Indigenous communities, supporting their goals as partners and helping uphold their rights and interests.



Recognized in the 2025 Best Law Firms ranking for Canada, in Aboriginal Law/Indigenous Practice and Constitutional Law in Québec.



Together
for Success

cainlamarre.ca • 418-522-4580

LOCATION

- › **Address :** [Pavillon Alphonse-Desjardins of Université Laval, Quebec](#)
- › **Rooms :** Espace Jardin (rez-de-chaussée) et Grand Salon (2^e étage)
- › **Parking :** Two paid parking lots are available near Pavillon Alphonse-Desjardins: an underground lot and an outdoor lot directly opposite.

TO NAVIGATE THIS PROGRAM

To view full details of the lectures and the people who will be presenting them, click on the time of the lecture in the summary program (underlined). At the bottom of every description page, you'll also find a link to return to the summary program.



[1:00 to 1:30 p.m. > > >](#)

[Back to November 19 summary](#)



TRANSLATION SERVICE

AQÉI is pleased to offer conference participants a simultaneous translation service (French and English) to encourage discussion and participation. This service will be provided by [SM-GLOBAL](#).

Speakers will present in either English or French, and participants will be able to choose either language to listen and ask questions. Please note that PowerPoint presentations will be made in the original language.



Through the Canada Impact Assessment Agency's Aboriginal Capacity Support Program, the FNQLSDI will support the participation of two representatives per community by reimbursing Congress registration fees and travel expenses (meals, accommodation, transportation). For more information, contact the AQÉI secretariat at aqei@aqei.qc.ca.

SUMMARY - MONDAY, NOVEMBER 18

Workshop offered in addition to the congress - Limited places

1:00 to 1:30 p.m. >>>

Welcoming participants - *Espace Jardin*

1:30 to 5:00 p.m. >>>

Participatory workshop - *Espace Jardin*

LIMITED PLACES!

Aboriginal and scientific knowledge in environmental assessments: transforming intercultural and identity-based challenges into opportunities, moderated by Marie-Michèle Dugas (Fika RH) and Stéphanie Belliard-Hogue (PercoLumen).

5:30 to 6:00 p.m. >>>

Member welcome - *Espace Jardin*

6:00 p.m. to 7:30 p.m.

ANNUAL GENERAL ASSEMBLY

REGISTRATION >

GRUPE SYNERGIS

With nearly **95 environmental professionals** across Quebec and active in **over 24 Indigenous communities**, we're ready to tackle your challenges!

Get in touch:

1-866-380-0513

www.synergis.ca

Our expertise includes:

- **Environmental services**
- Indigenous projects
- **Bathymetry**
- Land use planning
- **Surveying**
- Forestry
- **Geomatics**
- Web mapping

SUMMARY – TUESDAY, NOVEMBER 19

7:45 to 8:30 a.m. >>>

Welcoming participants - Grand Salon

Welcome and buffet-style breakfast

8:30 to 9:30 a.m. >>>

Welcoming words - Grand Salon

- > Congress opening by Yves Rochon, *head of the 2024 Congress organizing committee*, and Alexandra Boileau, *president of AQÉI*
- > Speech by Cain Lamarre, *Prestige partner of the congress*
- > Welcoming word from Nancy Gélinas, *dean of the Faculty of Forestry, Geography and Geomatics*
- > Welcoming word from Vincent Bourret, *director of the Nionwentsio Office, representative of the Huron-Wendat Nation*
- > Opening ceremony by Raymond Gros-Louis, *Huron-Wendat recognized as an Elder by various Nations across Canada and as a Sage in his community*

9:30 to 10:30 a.m. >>>

Prestige conference - Grand Salon

- > 9:30 to 10:00: Welcoming word from chief Gilbert Dominique, *chief of the Mashteuiatsh community*
- > 10:00 to 10:30: Presentation by Patrick Beauchesne, *CEO of Société du Plan Nord*

10:30 to 10:50 a.m. >>>

Health break - Grand Salon



OR



CONSULTATIONS

10:50 to 11:30 a.m. - Espace Jardin

Aboriginal consultation in environmental assessments: Regimes in Northern and Southern Quebec, presented by Julie Rodrigue and Mélissa Gagnon (MELCCFP)

11:30 a.m. to 12:10 p.m. - Espace Jardin

Respecting the sovereignty of indigenous data in impact assessments, presented by Annie Montpetit and Sabrina Bourgeois (Natural Resources Canada)

NEW APPROACHES

10:50 to 11:30 a.m. - Grand Salon

Aboriginal consultation and environmental assessment – The Huron-Wendat Nation’s approach, presented by Lori-Jeanne Bolduc and Charles-Antoine Lesage (Nionwentsio Office)

11:30 a.m. to 12:10 p.m. - Grand Salon

Nature’s rights in Quebec: towards greater protection for Lake Saint-Charles?, presented by Nathalie Gravel (Université Laval)

12:10 to 1:40 p.m. >>>

Lunch break, presented by:

Buffet-style meal served in *Espace Jardin*





NATIVE PARTICIPATION IN AGREEMENT TERRITORIES

1:40 to 2:20 p.m. - *Grand Salon*

The environmental and social protection regime specific to the James Bay Territory, presented by Michèle Leduc-Lapierre (JBACE)

2:20 to 3:00 p.m. - *Grand Salon*

Cree leadership and partnership in the Grand Alliance: New standards for the inclusion of indigenous knowledge and the transformation of environmental assessments, presented par Paul Wattez (WSP), Manon Richmond (Maamu Consultants) and Marc Dunn (SYM Consulting)

3:00 to 3:30 p.m. >>>

Health break - *Grand Salon*

3:30 to 4:10 p.m. - *Grand Salon*

Impact assessment procedures applicable to Nunavik, presented by Nancy Dea (KEAC) and Philippe Leblanc-Rochette (Makivvik)

4:10 to 4:50 p.m. - *Grand Salon*

Cree Land Use Monitoring – Rupert Diversion – 2009 to 2022, presented by Stéphanie Eveno (Hydro-Québec)

KNOWLEDGE MANAGEMENT

1:40 à 2:20 p.m. - *Espace Jardin*

Integrating indigenous knowledge into federal impact assessments: orientations and policies, practical challenges and reflections from the field, presented by Aurée Ross (IAAC)

2:20 to 3:00 p.m. - *Espace Jardin*

The role of corporate social responsibility (CSR) in integrating indigenous communities into mining governance: issues and prospects, presented by Emmanuelle Champion (TELUQ)

3:30 to 4:10 p.m. - *Espace Jardin*

Endogenous and local knowledge for adaptation to climate change, presented by Claire Depardieu (Université Laval)

4:10 to 4:50 p.m. - *Espace Jardin*

Setting the baseline for health and well-being: the importance of First Nations' contribution, presented by Étienne Frenette (ISC)

4:50 to 5:00 p.m. >>>

Instructions for the evening

5:00 to 10:00 p.m.

GALA AND RECOGNITION AWARDS *Cocktail and dinner*

At the Hôtel-Musée Premières Nations:

5, place de la Rencontre
Wendake (Quebec) GOA 4V0





The Ministère de l'Environnement, de la Lutte contre les changements climatiques, de la Faune et des Parcs **would like to thank the organizing committee and their collaborators, including the First Nations of Quebec and Labrador Sustainable Development Institute, for organizing** the Association québécoise pour l'évaluation d'impacts conference.

This unifying event offers a unique opportunity to listen and exchange ideas to advance our environmental assessment practices in order to integrate Indigenous knowledge and assess the impact of projects on the rights, activities and interests of Indigenous Peoples.

SUMMARY - WEDNESDAY, NOVEMBER 20

7:45 to 8:30 a.m. >>>

Welcoming participants - Grand Salon

Welcome and buffet-style breakfast



OU



INNOVATIVE APPROACHES

CUMULATIVE IMPACTS

8:30 to 9:10 a.m. - Grand Salon

8:30 to 9:10 a.m. - Espace Jardin

A co-construction approach with First Nations for better socio-cultural assessments, presented by Catherine Guillemette (Transport Canada), Roxane Lavoie (École supérieure d'aménagement du territoire et du développement régional) and Adélar Benjamin

Pelipaukau Shipi: Geography of the cumulative effects of industrial development according to Pekuakamiulnuatsh knowledge and territoriality, presented by Paul Antoine Cardin (ICCE)

9:10 to 9:50 a.m. - Grand Salon

9:10 to 9:50 a.m. - Espace Jardin

Aboriginal peoples and environmental assessment: Best practices, presented by Daniel Charbonneau and Laure Béziers (AECOM)

Challenges and lessons in evaluating cumulative impacts to Indigenous Rights, presented by Timothy Law and Francis Walsh (Mohawk Council of Kahnawa:ke)

9:50 to 10:20 a.m. >>>

Health break - Grand Salon



CONSULTATION ISSUES

ENERGY PROJECTS

10:20 to 11:00 a.m. - Grand Salon

10:20 to 11:00 a.m. - Espace Jardin

Consultation process and rights impact assessment within the W8banaki Nation: Issues, tools developed and presentation of a case study, presented by Mickaël Castelloux-Gaboury and Geneviève Campbell (W8banaki Nation Team)

Tracking the economic benefits of the Eastmain-Sarcelle-Rupert Complex for the Cree communities, presented by Rafael Cavalho and Carine Durocher (Hydro-Québec)

11:00 to 11:40 a.m. - Grand Salon

11:00 to 11:40 a.m. - Espace Jardin

Presentation by Pamela MacLeod, *local environment administrator for the Cree nation of Mistissini*. Details to follow.

Archaeological approach - Example of the Des Neiges Sud wind farm connection project, presented by Isabelle Duval (Hydro-Québec/UdeM) and Marine Puech (Hydro-Québec)

11:40 a.m. to 1:10 p.m. >>>

Lunch break

Buffet-style meal served in *Espace Jardin*

1:10 to 1:50 p.m. >>>

Conference - Grand Salon

Indigenous-led Assessments – Varying approaches around Eastern Canada, presented by Jaime Malone and Mathilde Butler (Odonaterra)

1:50 to 2:30 p.m. >>>

Conference - Grand Salon

Overview of consultation issues and avenues for reflection, presented by the First Nations of Quebec and Labrador Sustainable Development Institute, presented by Margo Burgess-Pollet and Jean-François Provencher (IDDPNQL)

2:30 to 2:45 p.m. >>>

Health break - Grand Salon

2:45 to 4:15 p.m. >>>

Discussion panel: Native voices - Grand Salon

4:15 to 4:30 p.m. >>>

Closing words and ceremony - Grand Salon

RATES AND REGISTRATION

Please note that with the exception of the “2 jours tout inclus” convention package, you must register for both the convention AND the Gala if you wish to attend.

CONGRESS

Several package options are available. Go to the conference registration page for complete rates.

[REGISTRATION >](#)

GALA (prices taxes not included)

- > Member : 225 \$
- > Non-member : 280 \$
- > Students and retirees : 150 \$

[REGISTRATION >](#)

TRANSFERT
ENVIRONNEMENT ET SOCIÉTÉ

We specialized in **public participation** and **social acceptability**

Engagement, Consultation and Facilitation

Cohabitation and Social Performance

Environmental and Social Communication

Impact Measurement and Reporting

Social Risk Analysis

Indigenous Reconciliation

transfertconsult.ca

PARTICIPATORY WORKSHOP *(places limited)*

1:30 to 5:00 p.m. >>> **Aboriginal and scientific knowledge in environmental assessments: transforming intercultural and identity-based challenges into opportunities**

In this highly interactive workshop, participants will be invited to open discussion on indigenous and scientific knowledge in environmental assessments, in order to build bridges between cultures and knowledge. Through sub-group exercises and plenary sessions, the room will be guided by 2 professional facilitators adopting a community-based and inclusive approach aimed at fostering the integration of different viewpoints.

MARIE-MICHÈLE DUGAS

MBA, CRHA, Accredited Mediator, President, Fika RH

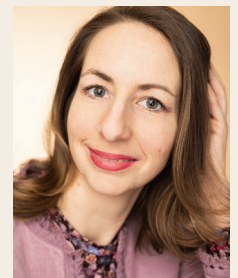


Marie-Michèle Dugas is passionate about work teams and has a knack for resolving complex situations. She advises and supports bilingual leaders and organizations in creating healthy, high-performance workplaces. Through her company, Fika RH, she offers services in organizational mediation, work climate and team development. Marie-Michèle graduated from Université Laval with a Baccalauréat en Relations Industrielles profil international and holds a Master's degree in Business Administration (MBA) profil gestion des entreprises. She has specialized in conflict resolution, obtaining Third Party Neutral certification from the Canadian Institute for Conflict Resolution, as well as Accredited Mediator certification from the Ordre des CRHA. She is recognized for her professionalism, her calm and intuitive approach, her ability to build trust, her joie de vivre and her capacity to analyze and understand human dynamics and organizational issues. She is delighted to be collaborating with AQEI to facilitate this workshop.

STÉPHANIE BELLIARD-HOGUE

Accredited mediator, conflict management coach and neutral third party, Founding President, PercoLumen

Stéphanie Belliard-Hogue is a practitioner of informal conflict resolution. Trained in law and political science, she is also a certified third-party neutral, conflict management coach and mediator. She also holds a specialization in environmental mediation from the Université de Sherbrooke. She founded PercoLumen to serve individuals, groups and organizations wishing to use their conflicts as an engine for individual and societal transformation.



CONSULTATIONS

10:50 to 11:30 a.m. >>> Aboriginal consultation in environmental assessments: Regimes in Northern and Southern Quebec

The Ministère de l'Environnement, de la Lutte contre les changements climatiques, de la Faune et des Parcs (MELCCFP) has been administering environmental assessment procedures in northern Québec since 1975, and in southern Québec since 1980. The aim of environmental assessment procedures is to inform decision-makers as to whether or not to authorize certain projects that are likely to cause significant environmental disturbance and raise public concerns. There is an environmental impact assessment and review procedure (PÉEIE) for southern Quebec, and environmental assessment procedures specific to the northern environment, based on the James Bay and Northern Quebec Agreement and the Northeastern Quebec Agreement. The conference will present the details of these environmental assessment procedures, as well as the Aboriginal consultation carried out as part of them.

JULIE RODRIGUE

Director, First Nations and Inuit Relations, MELCCFP



Ms Julie Rodrigue, Director of Relations with First Nations and Inuit, MELCCFP : Ms. Julie Rodrigue holds a Master's degree in Sociology - Sociology and Religious Anthropology, Native Studies from Université Laval. She worked for several years at the Secrétariat aux relations avec les Premières Nations et les Inuit, notably as team leader of the Pôle d'expertise sur les gouvernances en milieu nordique, before taking charge of the new Direction des relations avec les Premières Nations et les Inuit at the Ministère de l'Environnement, de la Lutte contre les changements climatiques, de la Faune et des Parcs in 2020.

MÉLISSA GAGNON

Assistant General Manager – Environmental and Strategic Assessment, MELCCFP

Mélicca Gagnon is Assistant Director General of Environmental and Strategic Assessments. With many years' experience in this sector of the Ministry, her career path also includes stints in the private and municipal sectors. Her career has also been significantly shaped by her experience in Kuujjuaq, Nunavik, where she worked for the Kativik Environmental Quality Commission and the Kativik Regional Government. There, she led various workshops aimed at gathering traditional knowledge with a view to better understanding the effects of climate change and the issues arising from it, and then identifying ways in which northern villages could adapt. Her experience in a variety of roles, from technical to management, has made her realize the value of traditional knowledge, but also the importance and challenges associated with transferring and landing knowledge in planning and decision-making. Her experience now enables her to contribute to advances in environmental and strategic assessment in Quebec, for the benefit of all stakeholders.



CONSULTATIONS

11:30 a.m. to 12:10 p.m. >>> Respecting the sovereignty of indigenous data in impact assessments

Details to follow

ANNIE MONTPETIT

Senior Impact Assessment Officer, Natural Resources Canada

Details to follow

SABRINA BOURGEOIS

Policy Analyst, Natural Resources Canada

Sabrina is a Policy Analyst in the Office of Aboriginal Knowledge, Science and Innovation at Natural Resources Canada. In particular, she helps build reciprocal relationships between scientific teams and their Aboriginal partners. She holds a master's degree in political science and is a doctoral candidate in political science at Université Laval. Her research focuses on aboriginal policies and natural resource governance in Canada and New Caledonia.



LUNCH BREAK: 12:10 TO 1:40 P.M.

Presented by:



NEW APPROACHES

10:50 to 11:30 a.m. >>> Aboriginal consultation and environmental assessment – The Huron-Wendat Nation’s approach

The territory of the Huron-Wendat Nation, the Nionwentsio (meaning “our magnificent territory” in the Wendat language), is subject to very strong development pressures of all sizes. The consultation obligations of governments and developers enable the Nation, in theory, to identify the impacts of these projects on its rights, activities and interests and, where appropriate, to identify accommodation measures. To this end, the various environmental assessment mechanisms are essential tools.

The Huron-Wendat Nation has unique expertise in consultation and participation in environmental assessments on its territory. The Bureau du Nionwentsio, the territorial office of the Huron-Wendat Nation Council, is made up of over 50 employees with a wide range of expertise, whose role is to defend the Nation’s rights. The purpose of this presentation is to provide an overview of the Huron-Wendat Nation’s approach to consultation and participation in environmental assessments, and to identify possible avenues for improvement in the consultation process as currently applied in Quebec.

LORI-JEANNE BOLDUC

Coordinator, Nionwentsio Office



Lori-Jeanne Bolduc holds a master’s degree in regional planning and development. She has been working in the consultation team at the Nionwentsio Office since 2019. Her role is to ensure the follow-up and coordination of the many consultations addressed to the Huron-Wendat Nation, in collaboration with the various experts at the Bureau du Nionwentsio.

CHARLES-ANTOINE LESAGE

Political anthropologist, Nionwentsio Office

Charles-Antoine Lesage is a proud member of the Huron-Wendat Nation and holds bachelor’s and master’s degrees in anthropology from Université Laval. He has many years’ experience as a researcher for the Nionwentsio Office. He specializes in political anthropology, and his main fields of expertise are the study of the Huron-Wendat Nation’s historical and contemporary occupation of the territory, First Nations history, social impact studies and power relations within Quebec territorial management.



NEW APPROACHES

11:30 a.m. to 12:10 p.m. >>> Nature's rights in Quebec: towards greater protection for Lake Saint-Charles?

Current measures to protect aquatic ecosystems in Quebec are insufficient. Legal recognition of natural entities, such as Lac Saint-Charles, could improve their protection by granting them rights and legal representation. This approach, already adopted in several countries, would better preserve the ecological integrity of the lake, which is essential to Quebec City's drinking water supply.

NATHALIE GRAVEL, PH.D.

PAssociate Professor, Past President of the Canadian Association of Geographers (CAG) Co-responsible for CentrEau's Governance Axis, Department of Geography, Associate Professor, Interim Director of the Agroforestry Program, Université Laval



Nathalie Gravel, professor of geography at Université Laval since 2005, specializes in Latin American rural development and participatory environmental governance. She was president of the Canadian Association of Geographers (2022-2024) and has served on the executive of numerous boards of directors. She is the author of several books and articles, including a textbook on the geography of Latin America (PUQ) and a forthcoming book with Springer: *Tending Nature: Fostering Eco-Citizenship in the Americas*.

LUNCH BREAK: 12:10 TO 1:40 P.M.

Presented by:



NATIVE PARTICIPATION IN AGREEMENT TERRITORIES

1:40 to 2:20 p.m. >>> The environmental and social protection regime specific to the James Bay Territory

This presentation will enable participants to discover:

- (1) the environmental and social protection regime specific to the James Bay Territory, and;
- (2) the institutions and mechanisms arising from the James Bay and Northern Québec Agreement (JBNQA) that help guarantee Cree participation in decision-making and in the protection of the Territory and their rights.



MICHÈLE LEDUC-LAPIERRE

Executive Director, James Bay Advisory Committee on the Environment (JBACE)

Michèle Leduc-Lapierre has been executive director of the CCEBJ since May 2018. She holds a bachelor's degree in biology and a master's degree in wildlife and habitat management from the Université du Québec à Rimouski. Prior to joining the CCEBJ, she worked in regional and binational task forces as well as in project management related to the Great Lakes and the St. Lawrence River.

NATIVE PARTICIPATION IN AGREEMENT TERRITORIES

2:20 to 3:00 p.m. >>> Cree leadership and partnership in the Grand Alliance: New standards for the inclusion of indigenous knowledge and the transformation of environmental assessments

Speakers will present how the contribution of the Crees, through the Cree Development Corporation and Maamuu Consultants, in partnership with WSP Canada, contributed to all stages of the Grand Alliance studies, and how this unprecedented collaboration is helping to transform environmental assessment standards.



PAUL WATTEZ

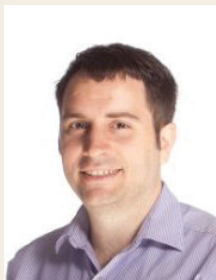
Native Relations Manager, WSP

Paul Wattez has 16 years of multi-sector operational and strategic management experience in Aboriginal relations in Quebec. His mandate is to support the growth of an Aboriginal economy in Quebec through business partnerships and collaborative expertise between WSP, Aboriginal Nations, communities and entrepreneurs.

MANON RICHMOND

Co-Founder, Maamuu Consultants

Manon is a woman from the Anicinapek8e Nation, married to a Cree from Oujé-Bougoumou. With a degree in administration and a certificate in leadership and aboriginal governance, she has over 20 years' experience in executive positions with various aboriginal organizations. Passionate about the well-being of First Nations people, Manon leads forest healing programs integrating traditional teachings.



MARC DUNN

President, SYM Consulting

Marc Dunn has worked with aboriginal communities for over 20 years in natural resource management and infrastructure project development. Between 2007 and 2020, he was Director of Environment for the Niskamoon Corporation. Since then, he has set up a consulting firm offering strategic advice to aboriginal communities and organizations on sustainable development projects on their territories.

CLARKE SHECAPIO

President – General Manager, Cree Development Corporation (CDC)

Clarke Shecapio hails from the Cree Nation of Waskaganish. This northern Quebec community is located on the Rupert River on James Bay. He is currently President and CEO of the Cree Development Corporation (CDC). This corporation is dedicated to empowering Cree communities and businesses by providing support, protecting Cree lands and interests, and creating opportunities for sustainable economic growth.



NATIVE PARTICIPATION IN AGREEMENT TERRITORIES

3:30 to 4:10 p.m. >>> [Impact assessment procedures applicable to Nunavik](#)

In Nunavik, various treaties provide constitutionally protected processes for impact assessment (IA). These treaties have been signed by the Nunavik Inuit, the Naskapi Nation of Kawawachikamach, the Cree Nation and the federal and provincial governments. In fact, up to six unique processes may apply to development projects in Nunavik and the Nunavik Marine Region (NMR), depending on location, project type, characteristics and anticipated impacts.

NANCY DEA

Environmental Analyst, Kativik Environmental Advisory Committee (KEAC)



For the past 20 years, Nancy Dea has worked with various Nunavik organizations in the field of environmental analysis and site remediation. Since 2006, she has been working for the Kativik Environmental Advisory Committee, mainly as an environmental analyst. The KEAC's mandate includes examining the environmental and social impact assessment processes applicable to Nunavik.

Since 2009, Nancy has been coordinating the clean-up of abandoned mining exploration sites in Nunavik, under the direction of the KRG. In collaboration with local communities and organizations, this project has restored more than 101 sites in Nunavik and raised the mining industry's awareness of its social and environmental responsibilities on the territory. Since 2019, Nancy has acted as coordinator for the restoration of mobile outfitting camps in Nunavik, a project led by Makivvik.

PHILIPPE LEBLANC-ROCHETTE

Environmental Coordinator, Makivvik

Philippe Leblanc-Rochette is Environmental Coordinator at Makivvik, and holds a Master's degree in Land Use Planning and a Bachelor's degree in Anthropology. As part of his master's project, he worked closely with aboriginal communities, environmental organizations, impact assessment practitioners and government stakeholders.

After completing his studies, Philippe began working at Makivvik, the organization responsible for protecting the rights and interests of Nunavik Inuit under the James Bay and Northern Quebec Agreement. His role encompasses various responsibilities within Makivvik's Environment, Wildlife and Research Department. Since 2023, Philippe has been leading the development and implementation of Nunavik's Climate Change Adaptation Strategy, in collaboration with Nunavik communities and organizations. He is also a member of the Impact Assessment Working Group, where he works with the KEAC and the Naskapi Nation of Kawawachikamach to analyze impact assessment processes in Nunavik.



NATIVE PARTICIPATION IN AGREEMENT TERRITORIES

4:10 to 4:50 p.m. >>> Cree Land Use Monitoring – Rupert Diversion – 2009 to 2022

As part of the Rupert diversion environmental monitoring program, a 15-year study of Cree land use was carried out. It concludes that changes have stabilized, encouraged by adaptation strategies on the part of users, themselves supported by measures put in place thanks to various funds.





STÉPHANIE EVENO
Environmental consultant, Hydro-Québec

Stéphanie Eveno holds a doctorate in anthropology from Université Laval. She has been an anthropologist with Hydro-Québec’s Human Environment Expertise team since 2009.



5:00 to 10:00 p.m. >>>
 Gala and recognition awards - *Cocktail and dinner*

AQÉI offers you the opportunity to highlight the career of one of your veterans, or to recognize the success of your next generation! Three honorary awards will be presented during the evening:

- > CAREER award, presented by 
- > DISCOVERY award
- > INNOVATION AND RAYONNEMENT award, presented by 

APPLICATION FORM >

KNOWLEDGE MANAGEMENT

1:40 to 2:20 p.m. >>> Integrating indigenous knowledge into federal impact assessments: orientations and policies, practical challenges and reflections from the field

The conference will present how indigenous knowledge is included in federal impact assessments. A short case study will then enable participants to enhance their understanding of the practical challenges inherent in integrating indigenous knowledge. The conference will conclude with some food for thought.



AUDRÉE ROSS

Senior Native Consultation Analyst, Impact Assessment Agency of Canada (IAAC)

A graduate in social sciences and aboriginal studies, Audrée Ross has been a senior analyst in aboriginal consultation for the Quebec regional office of the Canadian Impact Assessment Agency since 2018. Previously, she held the same position in the environmental assessments of northern and mining projects for the Quebec Ministry of the Environment.

1:40 to 2:20 p.m. >>> The role of corporate social responsibility (CSR) in integrating indigenous communities into mining governance: issues and prospects

This conference examines how corporate social responsibility (CSR), through tools and mechanisms such as Impact Benefit Agreements (IBAs), can facilitate the integration of indigenous communities into the governance of mining projects. It explores the main issues facing these communities and proposes perspectives for strengthening their participation, while highlighting the challenges associated with the imbalance of power relations with the extractive industry.

EMMANUELLE CHAMPION

Management professor, Université TÉLUQ

Emmanuelle Champion is a professor of management at the École des sciences de l'administration (ESA) at Université TÉLUQ. Her research focuses on the emancipatory potential of organizational social responsibility (OSR) for marginalized stakeholders, particularly in the context of their interactions with the mining industry. To this end, she studies how OSR tools and mechanisms, such as Impact Benefit Agreements (IBAs), can contribute to rebalancing the balance of power between companies and indigenous or local communities.



KNOWLEDGE MANAGEMENT

3:30 to 4:10 p.m. >>> Endogenous and local knowledge for adaptation to climate change

The “Yanayi” participatory action-research project will first be presented, highlighting the achievements obtained through the involvement of rural communities in eight countries of the French-speaking South in the collection of peasant knowledge and the creation of tools for reflection and action in the face of climate change. Next, the perspectives of this project in a Canadian context will be discussed, with the aim of involving the 11 aboriginal nations of Quebec.

CLAIRE DEPARDIEU

Research professional, Université Laval



Claire Depardieu is a committed young scientist who has been passionate about trees since childhood. Claire is currently a research professional in forest genomics in Prof. Jean Bousquet's group at the Institut de Biologie Intégrative des Systèmes and a research professional for the International University Network for Climate Action (UniC) at the EDS Institute. As part of her research, Claire explains the physiological and molecular mechanisms underlying forest resilience to various abiotic stresses. She is involved in global projects including UniC and a worldwide network of living laboratories in forestry and agroforestry.

KNOWLEDGE MANAGEMENT

4:10 to 4:50 p.m. >>> Setting the baseline for health and well-being: the importance of First Nations' contribution

Assessing the impact of major projects on the health of First Nations requires in-depth knowledge of the initial state of their health and environment. This knowledge is essential if we are to adequately identify health issues and plan mitigation and follow-up measures adapted to the contexts of the various First Nations groups concerned. Since much of the baseline data on their health and well-being is either not publicly available, or non-existent, their involvement in impact assessments is essential.





ÉTIENNE FRENETTE
Regional health impact assessment coordinator,
Indigenous Services Canada (ISC) – Quebec region

Etienne holds a technical diploma in water treatment, a bachelor's degree in environmental geology and a master's degree in environmental sciences. After working for several years in environmental health at Health Canada, he recently joined the Health Impact Assessment Service of the First Nations and Inuit Health Branch of Aboriginal Services Canada. Based in Quebec, he acts as regional health impact assessment coordinator.



5:00 to 10:00 p.m. >>>
Gala and recognition awards - Cocktail and dinner

AQÉI offers you the opportunity to highlight the career of one of your veterans, or to recognize the success of your next generation! Three honorary awards will be presented during the evening:

- > CAREER award, presented by 
- > DISCOVERY award
- > INNOVATION AND RAYONNEMENT award, presented by 

APPLICATION FORM >

KNOWLEDGE MANAGEMENT

8:30 to 9:10 a.m. >>> Aco-construction approach with First Nations for better socio-cultural assessments

In a world of increasing development pressures, First Nations have stressed the importance of assessing the cumulative socio-cultural effects on Aboriginal communities along the St. Lawrence and Saguenay rivers. A joint project between First Nations communities, Transport Canada and Université Laval has resulted in an innovative and collaborative co-development approach based on the recognition and respect of the right to self-determination. This presentation focuses on the results of an initiative based on new ways of working together.

CATHERINE GUILLEMETTE

Senior Environmental Consultant, Transport Canada



Catherine Guillemette has been passionate about conservation, natural resource management and environmental awareness for over 20 years. She has been an environmental assessment consultant for the federal government since 2007. Catherine has ensured the implementation of assessment processes for various projects for several departments such as Natural Resources Canada, Parks Canada and Transport Canada. Since 2017, she has been focusing on a project that is close to her heart and home: the assessment of the cumulative effects of marine activities on the St. Lawrence and Saguenay rivers.

ROXANE LAVOIE

Teacher, L'École supérieure d'aménagement du territoire et du développement régional

Roxane Lavoie has been a professor at the École supérieure d'aménagement du territoire et de développement régional since 2015. She has always been very close to nature and is dedicated to its protection. The reciprocity and benevolence shown by First Nations towards the land inspires her. She is proud to have joined with First Nations to protect the St. Lawrence and highlight essential knowledge about this system.



ADÉLARD BENJAMIN



Adélar Benjamin is Innu from the community of Pessamit. He studied political science at the Université de Chicoutimi and was an elected member of the Pessamit Innu Council for 14 years. He currently holds the position of project coordinator for the territory and resources sector. He is co-author of a forthcoming atlas on climate change in Nitassinan.

INNOVATIVE APPROACHES

9:10 to 9:50 a.m. >>> Aboriginal peoples and environmental assessment: Best practices

In an ever-changing world, where aboriginal peoples are demanding greater participation at the forefront of environmental impact assessments, it seems important for all stakeholders to have a clear understanding of the latest industry best practices in aboriginal participation, in line with community expectations, regulatory requirements and international standards. This presentation will be illustrated by a few examples of concrete projects.

DANIEL CHARBONNEAU

Aboriginal Relations Specialist, AECOM

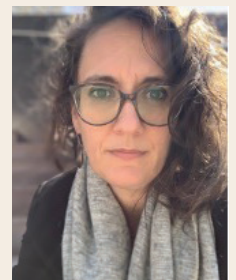


Daniel Charbonneau, Senior Specialist in Aboriginal Relations at AECOM Canada, has over 30 years' experience in a wide range of senior management positions in the field of Aboriginal relations, including consultation and negotiation, strategic planning, policy development and program management. He has extensive experience in developing strategies and plans for Aboriginal reconciliation and managing systemic change. Daniel also worked as a special policy advisor directly to two federal ministers responsible for Aboriginal Affairs and Northern Development for 4 years.

LAURE BÉZIERS

Aboriginal Relations Specialist, AECOM

Laure Bézières, is a communications, community mobilization and aboriginal relations specialist with Montreal-based AECOM Canada. With extensive experience in the Cree territory of Eeyou Istchee, she has developed a deep understanding of Aboriginal communities and their unique cultural contexts. Her expertise in community mobilization with Aboriginal peoples and her ability to navigate complex relationships have earned her a respected reputation in her field. She is dedicated to fostering cooperation and integration among stakeholders, ensuring project success. Her career is marked by an effective commitment to external relations and a deep appreciation of cultural diversity.



CUMULATIVE IMPACTS

8:30 to 9:10 a.m. >>> Pelipaukau Shipi: Geography of the cumulative effects of industrial development according to Pekuakamiulnuatsh knowledge and territoriality

Rooted in the concepts of historical and cultural geography, the collaborative research to be presented aims to describe the cumulative effects of industrial development based on the knowledge and territoriality of the Pekuakamiulnuatsh First Nation of Mashteuiatsh.



PAUL-ANTOINE CARDIN

Researcher, Indigenous Centre for Cumulative Effects (ICCE)

Paul-Antoine is a researcher at the Indigenous Centre for Cumulative Effects (ICCE). He holds a master's degree in environmental biogeosciences (MSc) and a doctorate in geographic sciences (PhD) from Université Laval. A native of the Sorel-Tracy region, he has lived in Quebec City since 2006.

CUMULATIVE IMPACTS

9:10 to 9:50 a.m. >>> Challenges and lessons in evaluating cumulative impacts to Indigenous Rights

Assessing cumulative effects can be difficult, due to complex interactions between components and access to available knowledge. In particular, assessing cumulative effects on Indigenous rights can be challenging due to numerous interactions with different factors and long temporal scope. Our presentation shares our lessons learned, completing cumulative effects analyses on rights and how they are interpreted in impact assessments.

TIMOTHY LAW

Director General of Environmental Protection, Mohawk Council of Kahnawà:ke

Timothy Law is the General Manager of Environment Protection at the Kahnawà:ke Environment Protection office within the Mohawk Council of Kahnawà:ke. He is part of the MCK's consultation committee and supports the committee through the evaluation of environmental impacts. Timothy has a Masters's degree in biology focusing on fish ecology and has been working for KEPO since 2022.

FRANCIS WALSH

Legal advisor, Mohawk Council of Kahnawà:ke

Francis Walsh is legal counsel for the Mohawk Council of Kahnawà:ke. He is part of the MCK's consultation committee and specializes in work related to the duty to consult and accommodate, which includes various regulatory approval processes, government authorizations, and impact assessment. He also has expertise in constitutional law and specific claims. He has acted and appeared before various boards, tribunals, and the Supreme Court of Canada, including for the MCK as an intervener in the Desautel and Southwind cases.

CONSULTATION ISSUES

10:20 to 11:00 a.m. >>> Consultation process and rights impact assessment within the W8banaki Nation: Issues, tools developed and presentation of a case study

This presentation will outline the mandate of the Bureau du Ndakina, as well as its process for responding to territorial consultations and analyzing the impacts of various projects on the rights of the W8banaki Nation. Issues related to consultations and increased development of the Ndakina will be presented and exemplified through a case study of cranberry plantation development in Centre-du-Québec, as well as the tools and initiatives developed by the Bureau du Ndakina to seek positive spin-offs for W8banakiak communities within the framework of consultations.



MICKAËL CASTILLOUX-GABOURY

Ndakina Office project manager in consultation, W8banaki Nation Team

With a bachelor's and master's degree from the Anthropology Department of Université de Montréal, Mickaël is in charge of consultation projects at the W8banaki Ndakina Office. Working closely with his team, he supports the W8banaki Nation's responses to territorial consultations. Versatility and sensitivity to territorial issues are at the heart of his mandate. As such, he actively participates in the entire research process aimed at determining the environmental, social and rights impacts of projects that directly or indirectly affect the Ndakina and W8banakiak.

GENEVIÈVE CAMPBELL

Territorial Consultation Coordinator, Ndakina Office, W8banaki Nation Team

As part of the territorial consultations submitted to the W8banaki Nation, Geneviève manages and follows up on the Nation's responses. She also collaborates and maintains relations with various government authorities and promoters at the consultation level.



**11:00 to 11:40 am.m. >>> Presentation by Pamela MacLeod,
Local Environment Administrator, Cree Nation of Mistissini**

Details to follow

LUNCH BREAK: 11:40 A.M. TO 1:10 P.M.

ENERGY PROJECTS

10:20 to 11:00 >>> Tracking the economic benefits of the Eastmain-Sarcelle-Rupert Complex for the Cree communities

As part of the construction of the Eastmain-Sarcelle-Rupert Complex, the Cree communities expressed their desire for Hydro-Québec to promote regional spinoffs in their communities. Hydro-Québec conducted a fifteen-year follow-up (2007 to 2021) covering both construction and the first years of operation. This presentation will describe the most promising optimization measures to promote Cree employment, the awarding of contracts to Cree firms and the development of local expertise.

RAFAEL CARVALHO

Environmental consultant – Human expertise, Hydro-Québec



Rafael Carvalho holds a bachelor's degree in economics, a master's degree in environment and a specialization in population studies and social statistics. He began his experience in environmental assessment in 2010 as an analyst at the Bureau d'audiences publiques sur l'environnement. Since 2020, he has been an environmental consultant with Hydro-Québec's human environment expertise, and has collaborated on various environmental assessments aimed at minimizing impacts on the human environment.

CARINE DUROCHER

Environmental consultant – Human expertise, Hydro-Québec

Carine Durocher holds a degree in anthropology from the Université de Montréal, and has been working in the field of social impact assessment and monitoring for infrastructure projects since 1999. She has been with Hydro-Québec since 2008, where she has worked on studies of the human impacts of hydroelectric developments, particularly in aboriginal environments, and more specifically in relation to social impacts and impacts on Cree land use. She has also sat on joint committees aimed at involving Cree communities in Hydro-Québec's environmental studies.



ENERGY PROJECTS

11:00 to 11:40 a.m. >>> Archaeological approach - Example of the Des Neiges Sud wind farm connection project

As part of the Des Neiges Sud wind farm connection project, an inclusive approach was used. This involved involving the Huron-Wendat and Innu Nations at the archaeological potential study stage, in order to gain their perspective on the historical occupation of the territory and incorporate it into the historical cultural context. The aim is to have aboriginal input upstream so that it can be integrated into the impact study. This approach also included the participation and collaboration of the nations in the subsequent stages of the project. This presentation will address some of the challenges encountered and the lessons learned from this collaborative work.

**ISABELLE DUVAL**

Archaeologist, environmental consultant, Hydro-Québec
Anthropologist specializing in archaeology, Université de Montréal

I'm interested in environmental reconstructions, supported by archaeometric analysis, and First Nations history. I've been working for Hydro-Québec since 2021. I assess the impact of projects on EuroQuebec and Aboriginal archaeological resources, and plan measures to protect and enhance this heritage.

MARINE PUECH

Archaeologist - Environmental consultant, Hydro-Québec Environment Branch

Marine Puech is an Environmental Expertise Advisor at Hydro-Québec. She holds a master's degree in anthropology from the Université de Montréal, and has over ten years' experience working for archaeological firms. Marine has worked on a variety of large-scale projects, including excavations, archaeological inventories and osteological analyses, drawing on her specialization in bioarchaeology. In 2023, she joined the Human Environment unit of Hydro-Québec's Environment Division, where she continues to contribute to the responsible management of archaeological heritage.

**LUNCH BREAK: 11:40 A.M. TO 1:10 P.M.**

1:10 to 1:50 p.m. >>> Indigenous-led Assessments – Varying approaches around Eastern Canada

Odonaterra is discussing various case studies of Indigenous-led assessment around Eastern Canada. Through our presentation we aim to reflect the diversity of approaches, the importance of contextual frameworks, and the power of community leadership.

**JAIME MALONE**

Impact assessment analyst, Odonaterra

Jaime is an Impact Assessment Analyst for Odonaterra Inc. who resides in Tiohtià:ke/ (Montreal). Jaime's work is centered around supporting Indigenous community-led projects, including impact assessments, land use planning, Indigenous knowledge and land use studies, and cumulative effects assessments.

MATHILDE BUTLER

Impact assessment planner, Odonaterra

Based in Tiohtià:ke, Mathilde joined the Odonaterra team in May 2024 as an Impact Assessment Planner. Prior to joining Odonaterra, she held the position of Environmental Project Manager on the Consultation Team at the First Nations of Quebec and Labrador Sustainable Development Institute, as well as the position of Environmental Analyst at the James Bay Advisory Committee on the Environment.



Mathilde was awarded the Rita R. Hamm IA Excellence Scholarship in the spring of 2024 to present her final Master's research on the assertion of the rights of indigenous peoples, as put forward in the United Nations Declaration on the Rights of Indigenous Peoples (UNDRIP) within the regional assessments during the IAIA annual conference in Dublin.

1:50 to 2:30 p.m. >>> Overview of consultation issues and avenues for reflection, presented by the First Nations of Quebec and Labrador Sustainable Development Institute

Governments have a constitutional duty to consult and accommodate First Nations when considering measures that may adversely affect their established or potential Aboriginal or treaty rights. This duty has even been delegated to other stakeholders.

Through this presentation, the FNQLSDI aims to provide an overview of the issues faced by First Nations consultation offices, and to propose avenues for reflection on best practices in the application of this obligation.

MARGO BURGESS-POLLET

Consultation project manager,

First Nations of Quebec and Labrador Sustainable Development Institute (FNQLSDI)



Margo holds a master's degree in impact assessment from Concordia University, and is a graduate of the School of Societal Transformation at the Centre Interdisciplinaire de Recherche en Opérationnalisation du Développement Durable (CIRODD). At the FNQLSDI, she is responsible for supporting First Nations' capacities in the context of impact assessments. She works with several First Nations in Quebec on consultation files and cumulative impacts.

JEAN-FRANÇOIS PROVENCHER

Consultation coordinator,

First Nations of Quebec and Labrador Sustainable Development Institute (FNQLSDI)

Jean-François trained as a forestry engineer and holds a master's degree in environmental management from the Université de Sherbrooke. He began his career working in the environment and forestry sector, notably for a watershed organization, the Fédération des Trappeurs Gestionnaires du Québec, and SÉPAQ. He continued his professional development with the Grand Council of the Waban-Aki Nation for approximately five years, where he was responsible for responding to and coordinating consultations affecting the W8banaki Nation. He is now a consultation coordinator with the First Nations Development Institute of Quebec and Labrador (FNQLSDI). With his team, he supports First Nations in their responses to consultations on sustainable development and all matters relating to territories and resources.



DISCUSSION PANEL

2:45 to 4:15 p.m. >>> Native voices

Details to follow.

Thank you! Mikwetc! **MIIGWETCH!** *Tshinashkumitin!* **NIA:WEN!**
Woliwon! Wliwni! **TIAWENHK!** Qujannamiik! **Nakurmiik!** Wâciye!

